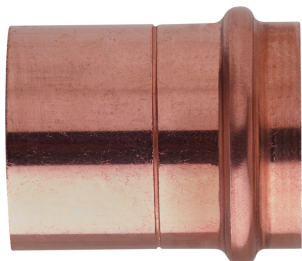
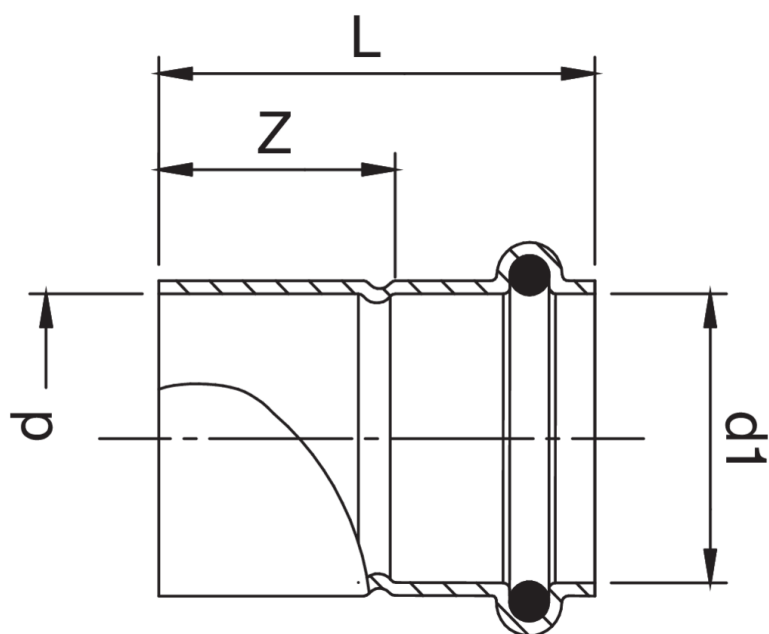


RJ5270



Manicotto femmina con estremità ad innesto.

Specifiche tecniche



| D X D1 | BAG | MASTER BOX | CODICE | L | Z |
|---------|-----|------------|-----------------|----|----|
| 32 x 32 | 5 | 50 | RJ5270032032000 | 46 | 25 |
| 40 x 40 | 10 | 50 | RJ5270040040000 | 55 | 30 |

Applicazioni



DRINKING WATER



HEATING



HVAC



GAS



COMPRESSED AIR



SOLAR



INDUSTRIAL

