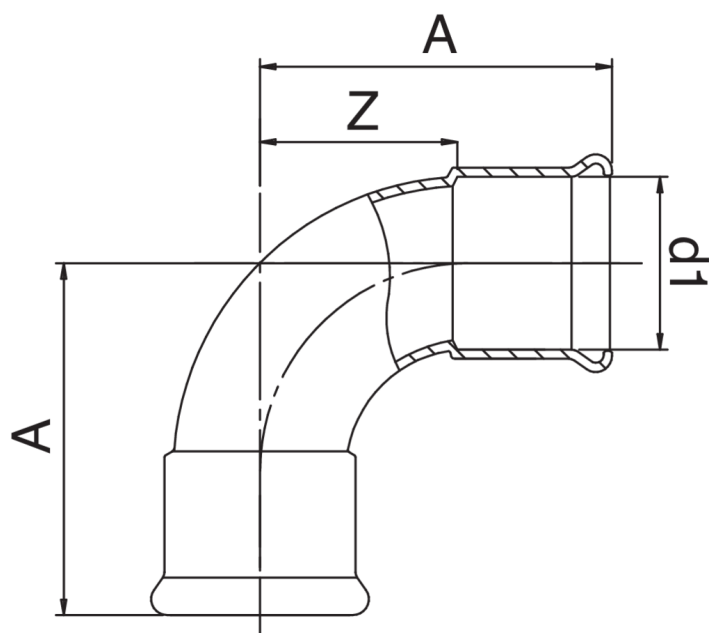




Curva 90° femmina.

Specifiche tecniche



| D1 | BAG | MASTER BOX | CODICE | A | Z |
|-------|-----|------------|-----------------|-----|-----|
| 76,1* | 1 | 4 | AC0002076076000 | 146 | 91 |
| 88,9* | 1 | 4 | AC0002089089000 | 167 | 107 |
| 108* | 1 | 2 | AC0002108108000 | 200 | 130 |

* Profilo M.

Applicazioni



HEATING



HVAC



COMPRESSED
AIR