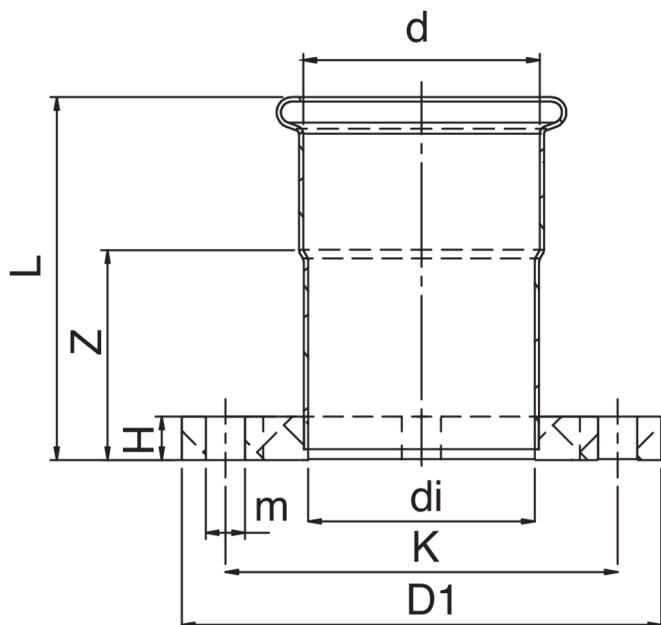




Joint avec bride F PN16.

Spécifications techniques



| D | BAG | MASTER BOX | CODE | DI | D1 | H | K | L | M | Z | N° HOLE |
|----|-----|------------|-----------------|-----|----|------|----|----|-----|------|---------|
| 35 | 2 | 20 | CM0273035000000 | 140 | 32 | 53 | 14 | 18 | 100 | 26 | 4 |
| 42 | 2 | 10 | CM0273042000000 | 150 | 39 | 56,5 | 13 | 18 | 110 | 26,5 | 4 |
| 54 | 2 | 10 | CM0273054000000 | 165 | 51 | 65 | 15 | 18 | 125 | 30 | 4 |

Applications



HEATING



HVAC



COMPRESSED
AIR