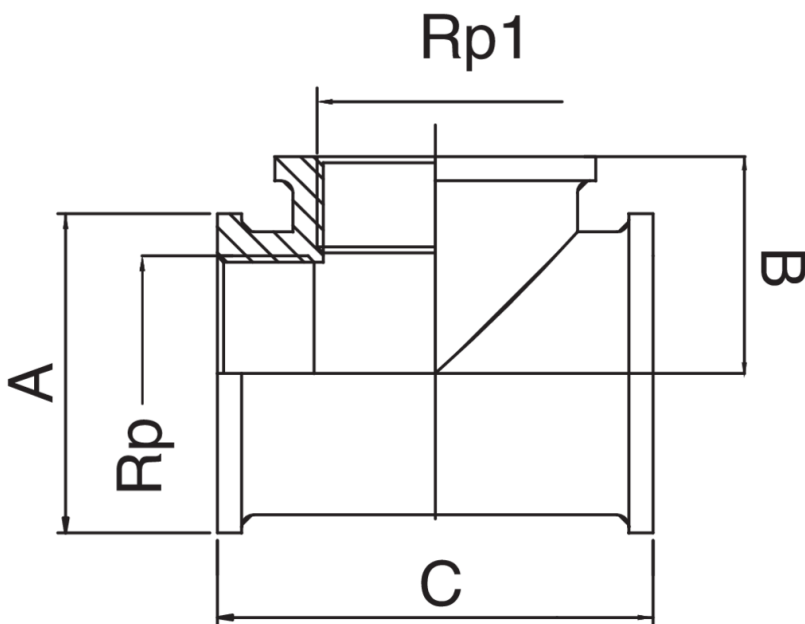


OT5005

T rosca hembra.



Especificaciones técnicas



RP X RP1	BAG	MASTER BOX	CÓDIGO	A	B	C
1/4" x 1/4"	10	200	OT5005A14A14A14	20	19	38
3/8" x 3/8"	10	150	OT5005A38A38A38	23	21	42
1/2" x 1/2"	10	100	OT5005A12A12A12	28	25	50
3/4" x 1/2"	10	100	OT5005A34A12A34	31	26	52
3/4" x 3/4"	5	50	OT5005A34A34A34	35	27	54
1" x 3/4"	10	50	OT5005B01A34B01	38	29	58
1" x 1"	5	30	OT5005B01B01B01	42	31	62
1"1/4 x 1"1/4	5	20	OT5005B14B14B14	51	40	80
1"1/2 x 1"1/2	1	15	OT5005B12B12B12	57	45	90
2" x 2"	1	10	OT5005C02C02C02	70	50	100
3" x 3"	1	2	OT5005D03D03D03	80	60	120

Aplicaciones



DRINKING
WATER



HEATING



HVAC



GAS



COMPRESSED
AIR



SOLAR



FIREFIGHTING