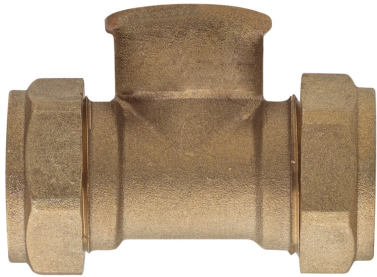
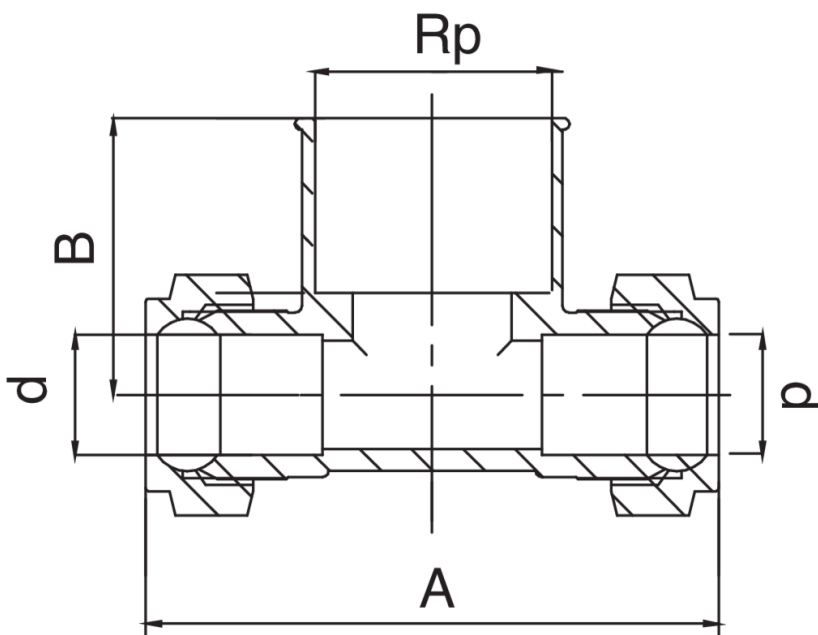


## OT6130

T H/rosca hembra/H.



### Especificaciones técnicas



D X RP	BAG	MASTER BOX	CÓDIGO	A	B
10 x 3/8"	10	100	OT6130010A38010	53	23
12 x 1/2"	10	100	OT6130012A12012	57	24
14 x 1/2"	10	100	OT6130014A12014	58	26
15 x 1/2"	10	100	OT6130015A12015	59	26
16 x 1/2"	10	100	OT6130016A12016	59	26
22 x 1/2"	10	100	OT6130022A12022	62	27

# Aplicaciones



DRINKING WATER



HEATING



HVAC



GAS



COMPRESSED AIR



SOLAR