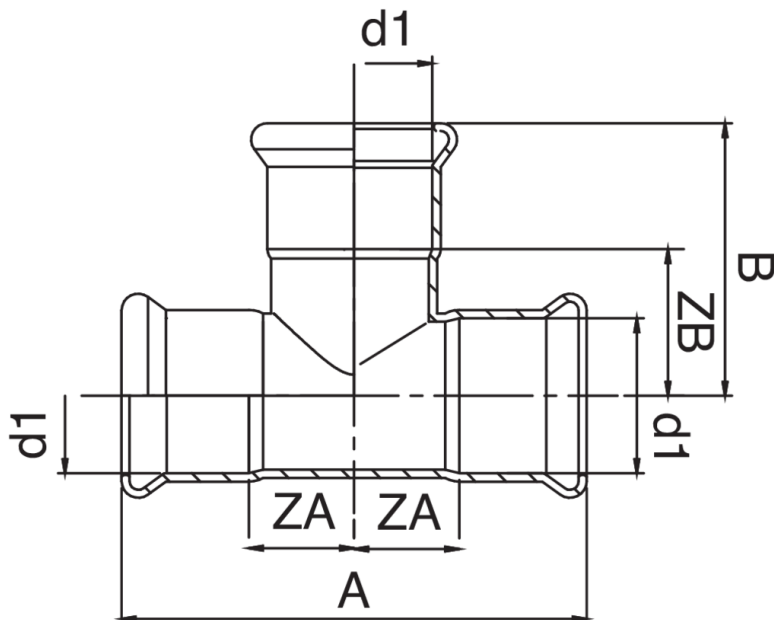


T H/H/H.

Especificaciones técnicas



| D1 | BAG | MASTER BOX | CÓDIGO | A | B | ZA | ZB |
|----|-----|------------|-----------------|-----|------|------|------|
| 15 | 5 | 40 | GM0130015015015 | 68 | 34 | 14,5 | 14,5 |
| 18 | 5 | 50 | GM0130018018018 | 70 | 35 | 15,5 | 15,5 |
| 22 | 5 | 30 | GM0130022022022 | 79 | 39,5 | 17 | 17 |
| 28 | 5 | 20 | GM0130028028028 | 92 | 46 | 23,5 | 23,5 |
| 35 | 1 | 15 | GM0130035035035 | 106 | 53 | 27,5 | 27,5 |
| 42 | 1 | 10 | GM0130042042042 | 124 | 62 | 32,5 | 32,5 |
| 54 | 1 | 5 | GM0130054054054 | 146 | 73 | 38,5 | 38,5 |

Aplicaciones



GAS



COMPRESSED
AIR



INDUSTRIAL