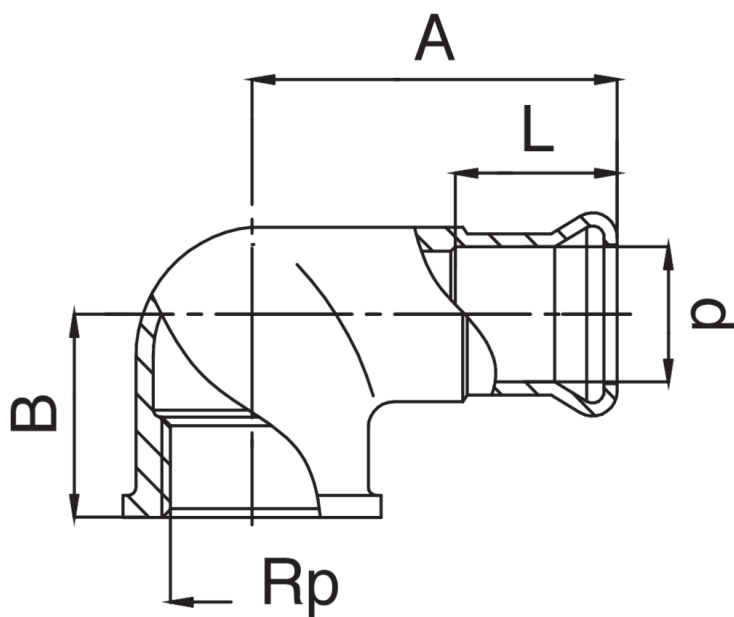




Codo mixto 90° H/rosca hembra de bronce.



## Especificaciones técnicas



| D X RP     | BAG | MASTER BOX | CÓDIGO          | A  | B    | L    |
|------------|-----|------------|-----------------|----|------|------|
| 12 x 3/8"  | 10  | 150        | ZM8090A38012000 | 33 | 18   | 15,5 |
| 12 x 1/2"  | 10  | 150        | ZM8090A12012000 | 40 | 22   | 15,5 |
| 15 x 3/8"  | 10  | 100        | ZM8090A38015000 | 35 | 19   | 18,5 |
| 15 x 1/2"  | 10  | 100        | ZM8090A12015000 | 38 | 23   | 18,5 |
| 15 x 3/4"  | 10  | 70         | ZM8090A34015000 | 41 | 24   | 18,5 |
| 18 x 1/2"  | 10  | 100        | ZM8090A12018000 | 38 | 23   | 18,5 |
| 18 x 3/4"  | 5   | 70         | ZM8090A34018000 | 41 | 24   | 18,5 |
| 22 x 1/2"  | 10  | 60         | ZM8090A12022000 | 41 | 25   | 21,5 |
| 22 x 3/4"  | 5   | 60         | ZM8090A34022000 | 44 | 29,5 | 21,5 |
| 22 x 1"    | 5   | 40         | ZM8090B01022000 | 47 | 32   | 21,5 |
| 28 x 1"    | 5   | 40         | ZM8090B01028000 | 52 | 32   | 22   |
| 35 x 1"1/4 | 1   | 20         | ZM8090B14035000 | 60 | 40   | 24,5 |
| 42 x 1"1/2 | 1   | 20         | ZM8090B12042000 | 66 | 41   | 28,5 |
| 54 x 2"    | 1   | 8          | ZM8090C02054000 | 77 | 55   | 33,5 |

## Aplicaciones



DRINKING  
WATER



HEATING



HVAC



COMPRESSED  
AIR



FIREFIGHTING