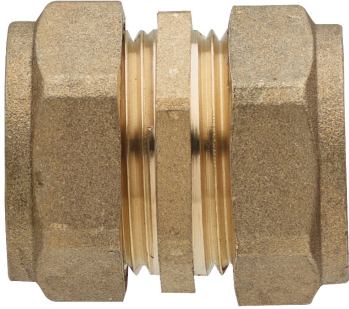
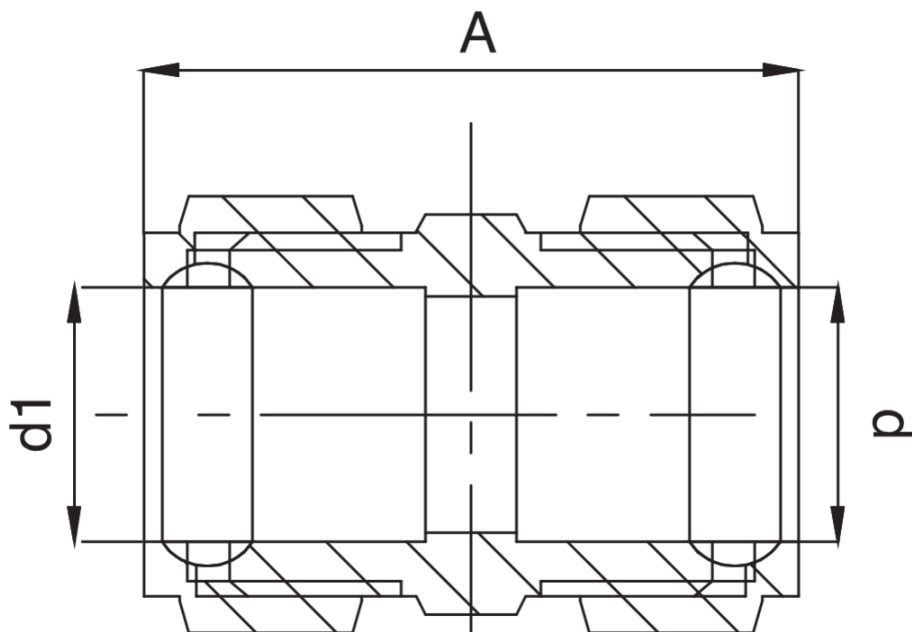


## OT6009

Muffe I/I.



### Technische Spezifikationen



D X D1	BAG	MASTER BOX	CODE	A
8 x 8	10	200	OT6009008008000	36
10 x 8	10	200	OT6009010008000	36
10 x 10	10	200	OT6009010010000	36
12 x 10	10	200	OT6009012010000	36,5
12 x 12	10	200	OT6009012012000	37
14 x 14	10	400	OT6009014014000	41
15 x 10	10	100	OT6009015010000	39
15 x 12	10	100	OT6009015012000	39,5
15 x 15	10	100	OT6009015015000	42
16 x 16	10	100	OT6009016016000	42
18 x 18	10	100	OT6009018018000	45
22 x 15	10	100	OT6009022015000	43,5
22 x 22	10	100	OT6009022022000	45
28 x 22	10	100	OT6009028022000	51
28 x 28	10	120	OT6009028028000	55

## Anwendungen



DRINKING  
WATER



HEATING



HVAC



GAS



COMPRESSED  
AIR



SOLAR